

General description

The N1hxSW 12W family of switch mode power supplies delivers typically 12W output and features wide-range input (90-264V), small size and light weight.

The units are available in cable-cable, terminal version and printed circuit module versions.



Features

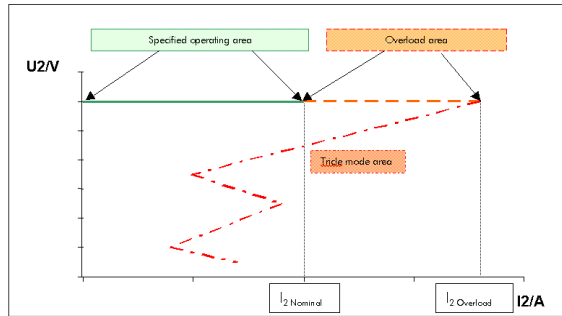
- **EuP Tier II conform**
- Wide input range (90-264V)
- Output voltage fixed (5-24VDC)
- Output voltage stability $\pm 3\%$ on PCB
- Output power 12W
- Protection class II
- Short circuit proof
- Manufacturing according to ISO 9001
- Wide operating temperature range (-20 to +50°C)
- **Cable – cable version**
The unit is designed to fit into standard flush boxes and can be mounted onto wood-surfaces or materials with unknown flammability. The connection to mains and to the customer unit is realised with cables.
- **Printed circuit board module version**
The unit is designed to be soldered onto a PCB with soldering pins.
- **Terminal version**
The unit is designed to connect the wires into a terminal.

Input Parameter	Key	Min	Typ	Max	Unit
Input voltage	U ₁	90		264	V
Input current	I ₁	2	130	400	mA
Input frequency	f ₁	47	50	63	Hz
Op. Temperature	T	-20		50	°C
Efficiency	η		80		%
		According EuP Tier II			




Output Parameter	Key	Min	Typ	Max	Unit
Output Power	P ₂			12	W
Output Voltage	U ₂	5		24	V
Output current	I ₂			1	A
Ripple voltage	U _{RMS}			140	mV RMS
Output voltage tolerance at PCB	T _{U2}			3	%
Output voltage tolerance cable-cable version with EGSTON standard cable 19cm/0,5mm ²	T _{U2}			+3/-4	%

Generic Product Code

- N1hFSW3 12W PS EuPII Cable version**
- N1hPSW3 12W PS EuPII PCB version**
- N1hKSW3 12W PS EuPII Terminal version**

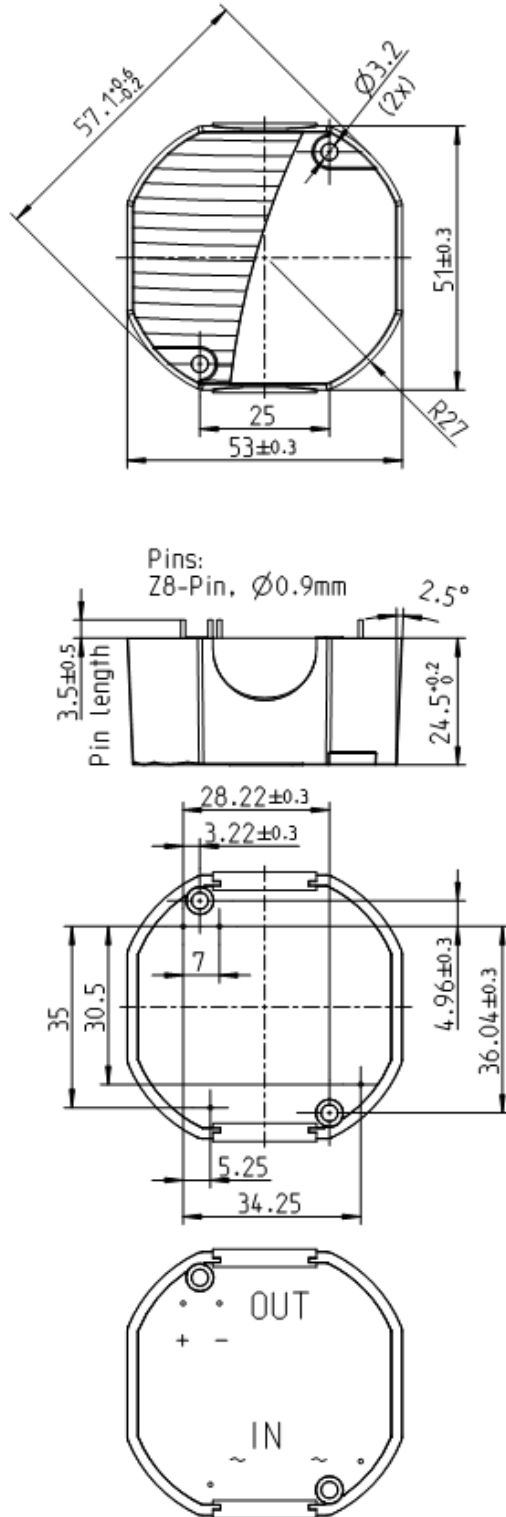
Typical output chart

Test standards and approvals

Test standards
EN 60950-1
EN 60335-1
EN 61558-2-16
UL 60950-1
EN 55014-1
EN 55014-2
EN 55022
EN 55024

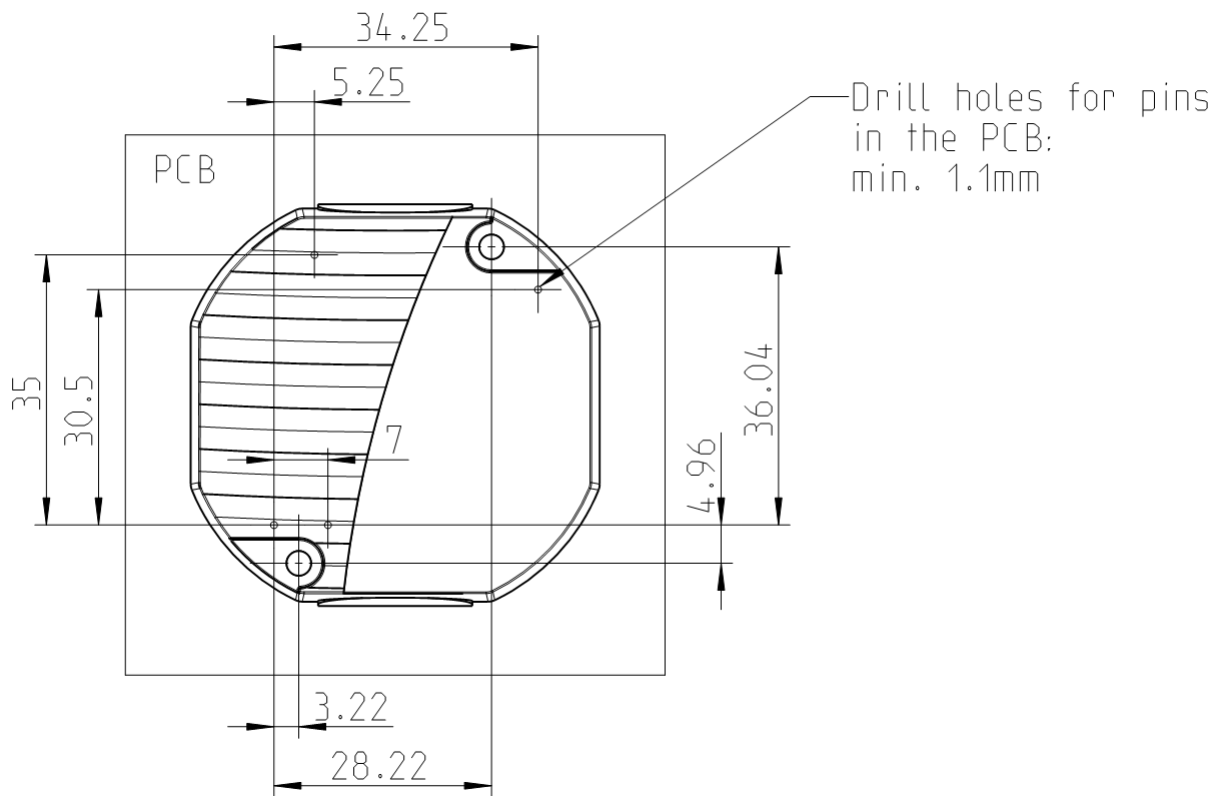
Approvals
  

Housing Dimension

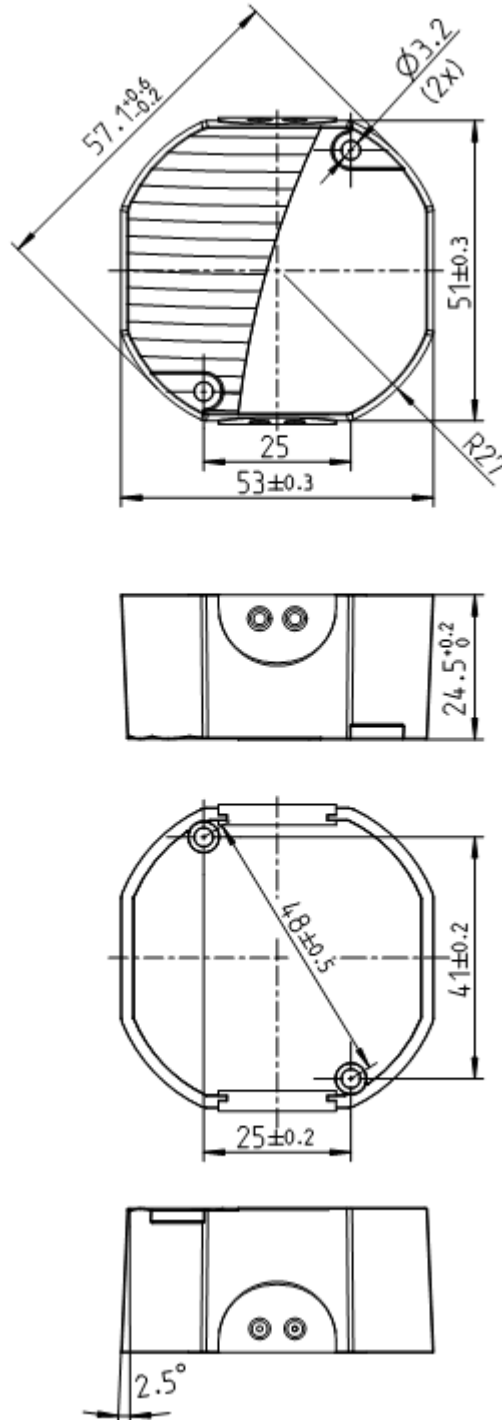
Printed circuit board module version:

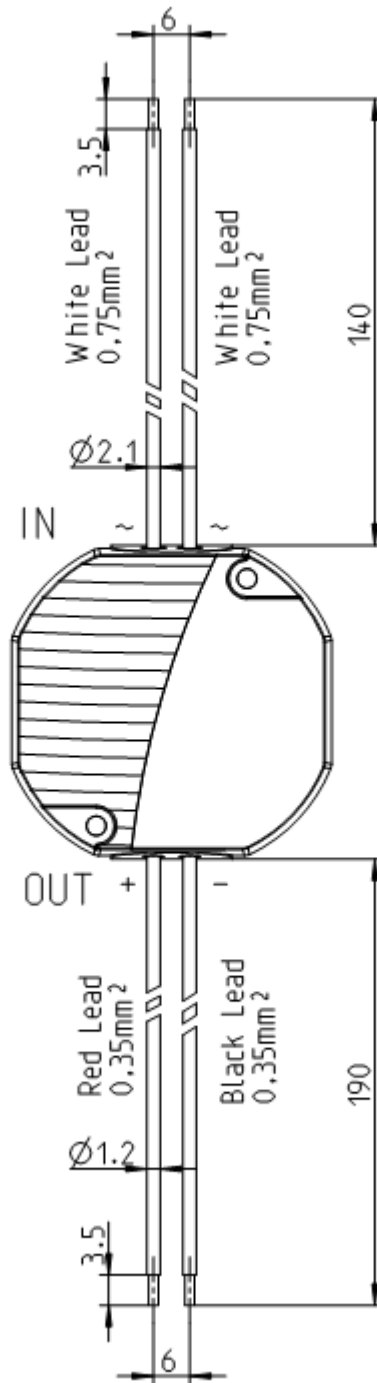


Design suggestion of the layout for printed circuit board module version:



Cable – cable version:





Terminal version:

